



We're more than just rulers!

Quilter's Rule™

Lap Board Instructions

General instructions for using the 12½", 16½" and 24½" lap boards.

The Quilter's Rule Square Block Lap Boards give you a sturdy working lap size surface to help you keep your pieces together. Great for traveling and working on all handiwork or as a writing surface. It is an ideal measuring companion for use with rotary cutters.

Unlimited uses:

- Measuring applique base squares
- Cathedral window base square and center
- Folded stars
- Squares
- Much more

How To Use:

1. Always work with a piece of fabric that has been 90° squared off in the left hand corner as illustrated (A).

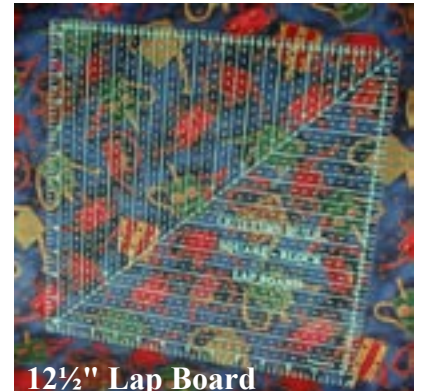
This is your main fabric preparation for squaring up your squares. This ensures a perfect square when finished cutting.

2. Using the straight 90° corner of your fabric slide the lap board to the desired unfinished square size. Remember: Always add an extra half inch to create your ¼" seam allowance around the square. To make a 12" finished square, for example, after all seam allowances have been used, you must cut a 12½" square.

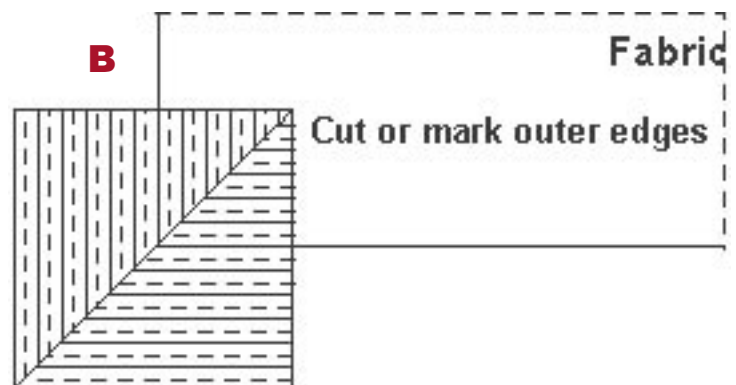
3. Apply light hand pressure with one hand spread open and flat on top of the lap board surface. This assures keeping the lap board in place. Grip Stop Dots (available from Quilter's Rule) also help to prevent the 16½" and 24½" lap boards from slipping as these are smooth back silk screened rulers. The lines and numbers on the 12½" lap board are molded into the ruler for perfect accuracy.

4a. Using a rotary cutter - Simply run the rotary cutter along the two outer edges to cut. See illustration (B).

4b. Marking edges for cutting - Mark around the two outer edges of the lap board. Remove board and cut. See illustration (B).



12½" Lap Board



You now have a perfect square without all the fuss of graph paper and measuring.

Care of Ruler: Clean with a mild soap and water or non-ammonia glass or window cleaner.