

## NAUTILUS DELTA BORDER

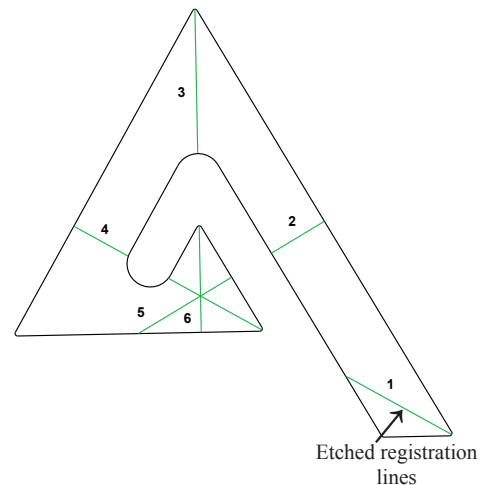
The Nautilus Delta Tools are easy and versatile tools to work with, but as with any new tool or technique, practice is encouraged before you start quilting. Template testers\* may have been included so you can practice drawing new designs\*\*.

If you are quilting on a quilting machine, the appropriate template foot for your machine is required and using an extended base is recommended.

If you have trouble with the tools slipping while you are quilting, try using Grip Stop Dots (available from Quilter's Rule) or 505 Temporary Adhesive Spray.

Directions for the border design can be used with any size of the Nautilus Delta Tools.

The Nautilus Delta Tool is now etched with registration lines that divide it into 6 sections (earlier Delta Tools had 8 registration lines, either tool will work to make this border). They are numbered starting from the open or tail end. These are used to help you keep the baseline even on some designs.

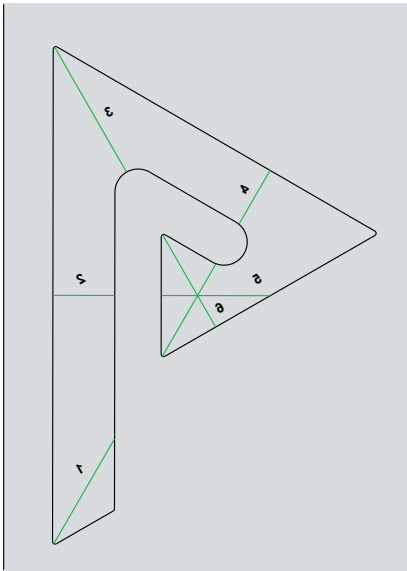


\*Template testers are also available from Quilter's Rule - send a self-addressed envelope to Quilter's Rule, Nautilus Tools, 817 Mohr Avenue, Waterford, WI 53185.

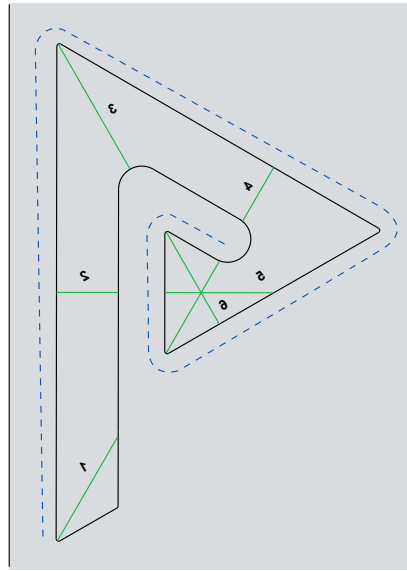
\*\*For more block, border and corner designs check out the instruction booklet, which will be available soon where you purchased this tool.

©2007 Sheri Wood

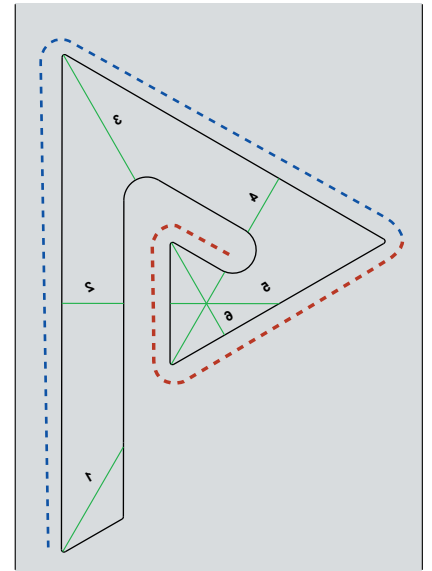
No part of these directions may be reproduced by any means without written permission from White Robin Designs, Box 71, Altona, IL 61414.



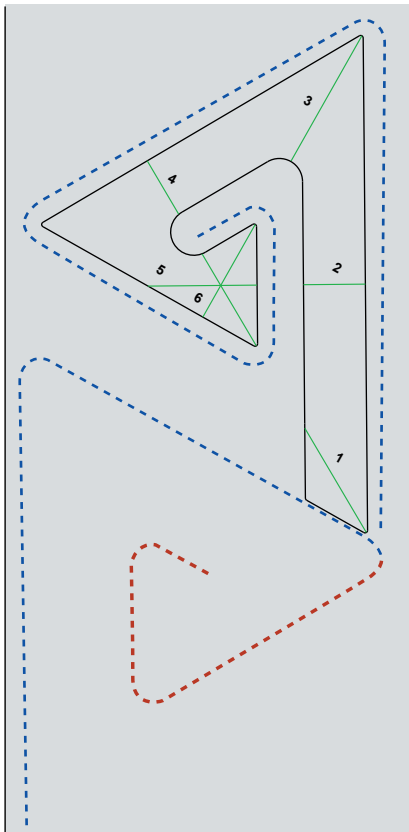
1. Place the Nautilus Delta Tool about  $\frac{1}{2}$  inch from the border seam, with the longest edge of the tool parallel to the border edge.



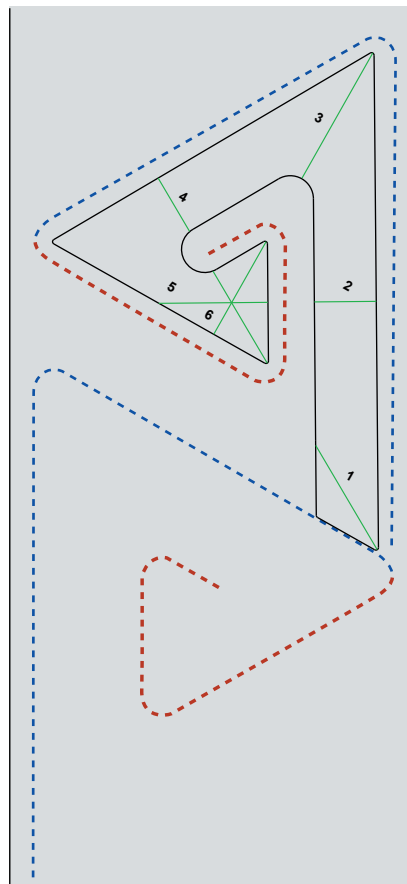
2. Bring up your bobbin thread and anchor your stitching line. Begin stitching around the outside edge of the Delta tool, adjusting your hand position as necessary, until you stitch to the center of the tool.



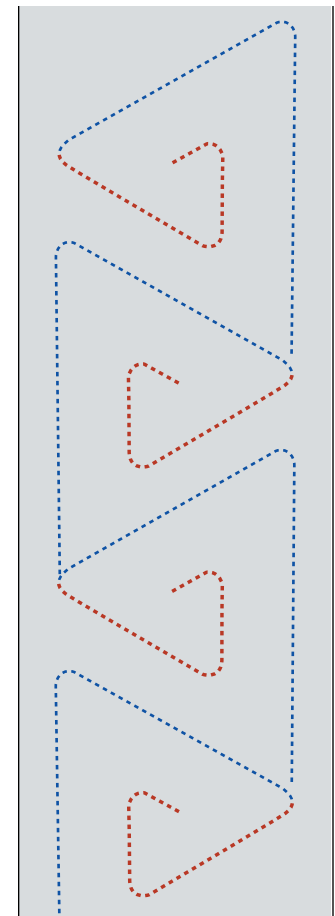
3. Backtrack your stitching line until you reach the border seamline. (Backtracking shown in red.)



4. Move the Nautilus Delta Tool, flipping it so it is facing the opposite direction as before, with the longest edge again along the seam line and begin stitching around the tool until you reach the center.



5. Backtrack your stitching until you reach the border seamline. (Backtracking shown in red.)



6. Continue alternating the direction of the Delta Tool, stitching until you finish your border or need to move the quilt.

7. **Embellish as desired.**