



We're more than just rulers!

Quilter's Rule®

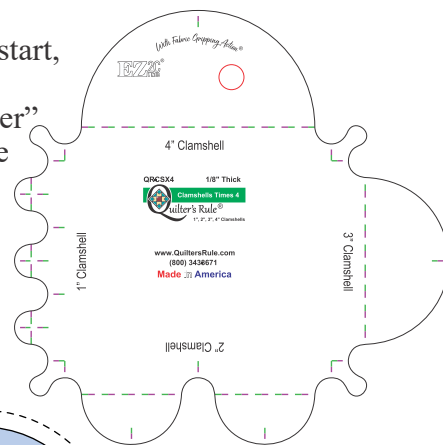
A Division of Laser Excel
N6323 Berlin Road
Green Lake, WI 54941





Clamshell Template Instructions

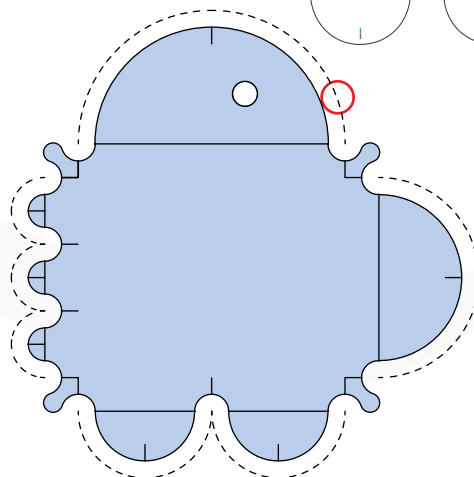
The Clamshell templates are multi size tools and create a 1", 2", 3", and 4" arc or clamshell pattern
Available in 1/4" acrylic for Longarm and High Shank Home machines (MQT-CSX4)
Available in 3/16" acrylic for some High Shank and some Low Shank Home machines (HMQT-CSX4)
Available in 1/8" acrylic for Low Shank Home machines (QR-CSX4)

Quilter's Rule Templates have EZ2C® Registration Lines and Fabric Gripping Action® on the bottom to help grip the fabric.

These tools are designed for machine quilting (aka ruler quilting). Before you start, please make sure you have the correct foot on your machine to use templates (aka rulers). The dimensions of these tools are designed with the 1/2" round "ruler" foot in mind. This means the foot is 1/2" wide from outside edge to outside edge and it is "thick" or "tall" walled. If your foot is a different size, your stitch line will be slightly different than the stated measurement. If you have any questions about the correct ruler foot for your machine, please contact your dealer or the manufacturer of your machine.



SYMBOL GUIDE	
	ruler foot
	start
	stop and needle down
	back stitching

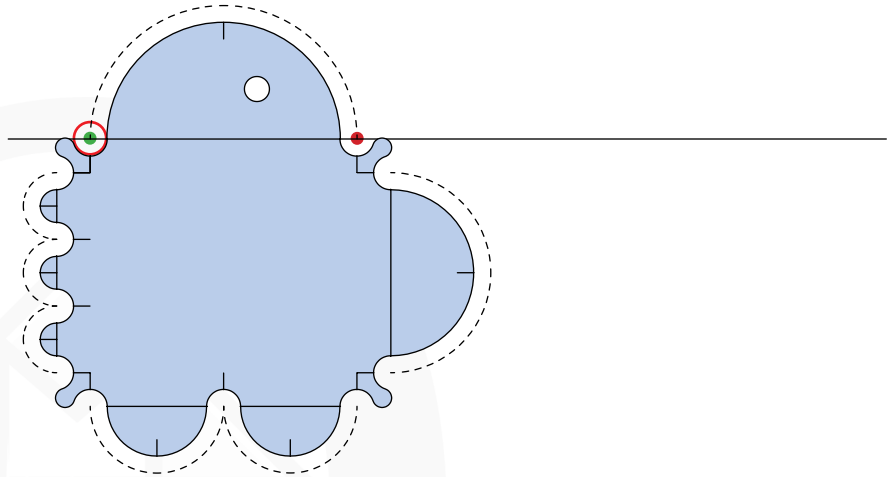


Notes/Tips:

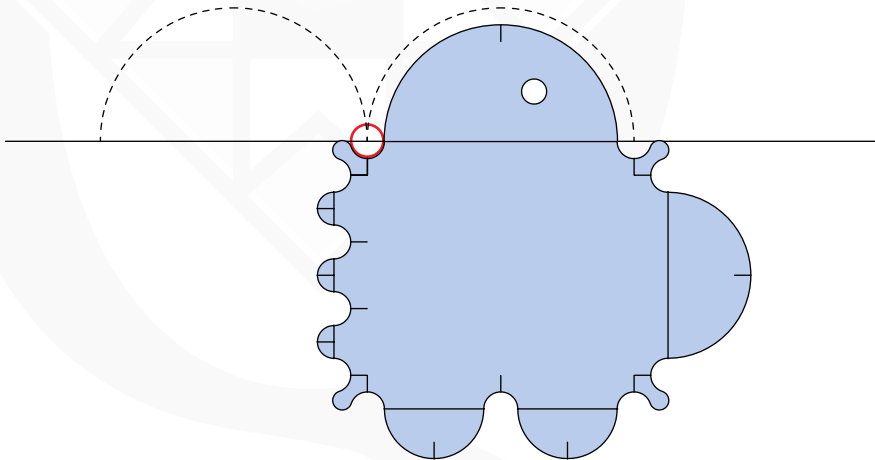
- When using templates/rulers to quilt around, you will be stitching 1/2" larger (the width of your foot) when stitching completely around the template, or 1/4" wider if only using a portion of the template (the distance from your needle to the outer edge of your foot).
- If using templates/rulers on a machine that moves (stand-up or frame), be sure to have the ruler base attached to your machine.
- You may need to start with drawn/chalked guidelines on your quilt if there is no seam where you want the quilting to be placed.
- Make sure your needle will stop in the "needle down" position.
- Lower your feed dogs if you are on a Home Machine.

CLAMSHELL PATTERN FILL

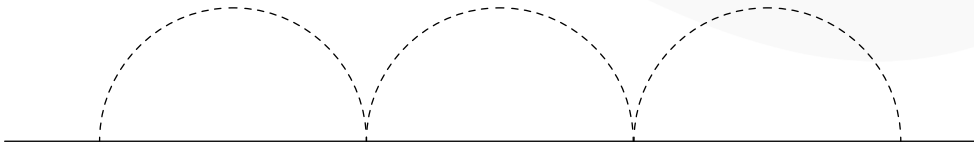
Align the EZ2C® registration line on the template to your guideline, and sew from one end to the other. Needle down.



Slide the tool to the right. Align EZ2C® registration line with guideline on quilt. Stitch next arc. Continue in this fashion for desired length.



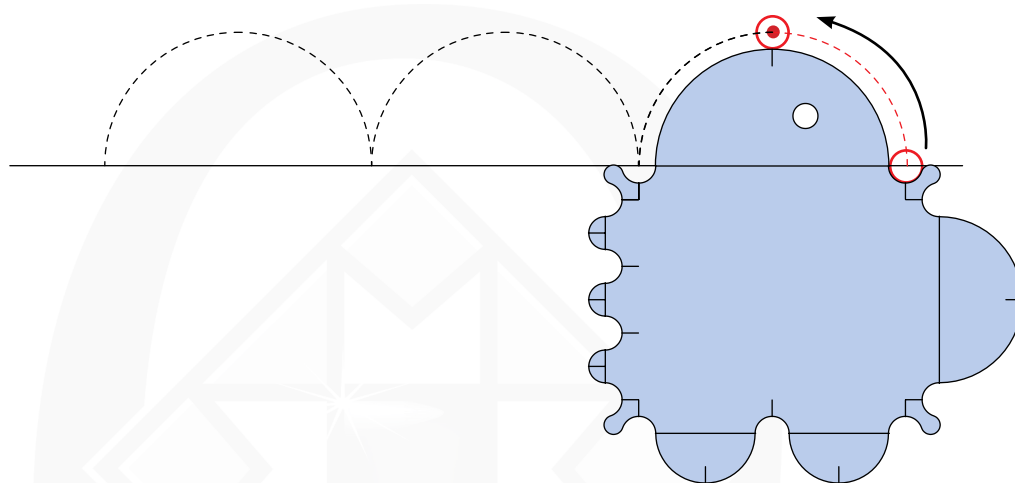
You can stop here for a single row of arcs.



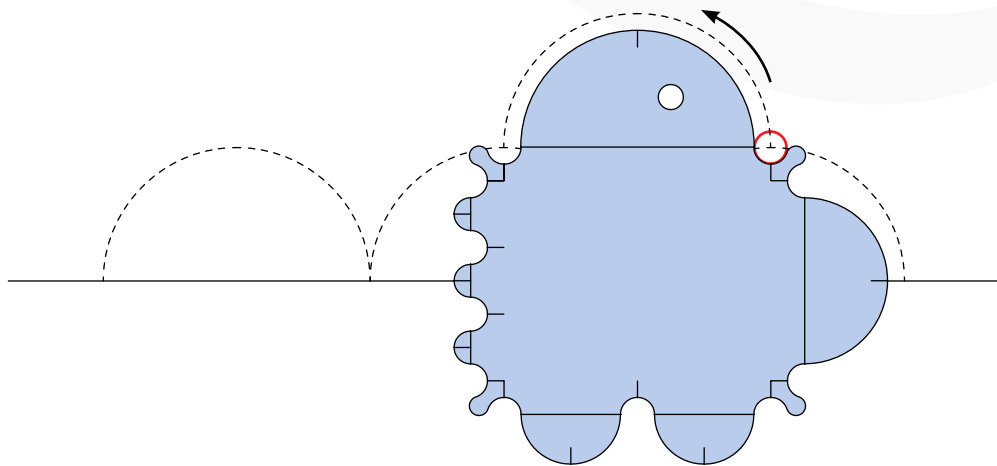
Try staggering the arcs for a fun variation.



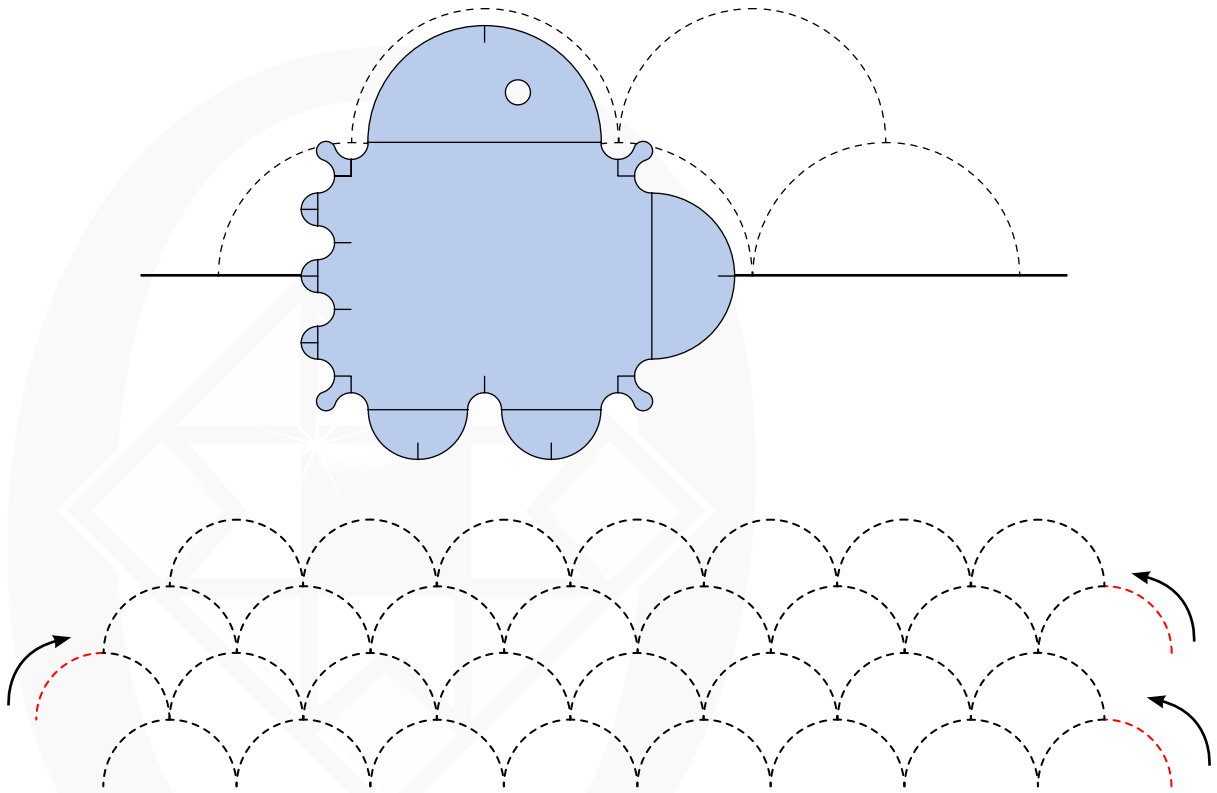
To create the Clamshell fill: When you get to the end of your base row, backtrack over $\frac{1}{2}$ of last arc, stopping at small EZ2C® registration line as shown below.



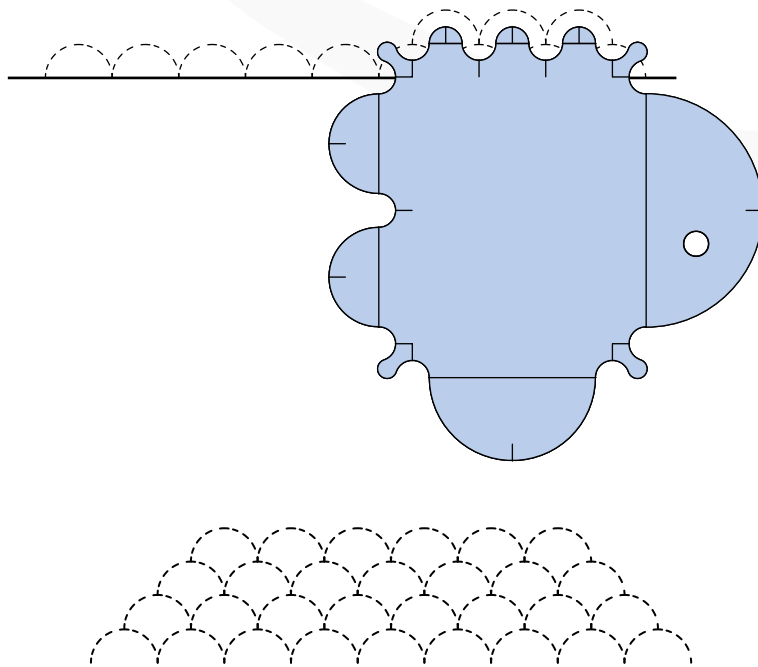
Move ruler up to this new position aligning the small arc with the ruler foot and EZ2C® registration line with the top of the stitched arcs. Stitch across to the other side of the arc. Continue stitching and moving template as in previous row but this time in the opposite direction.



Fill in desired area with staggered rows of clamshell.

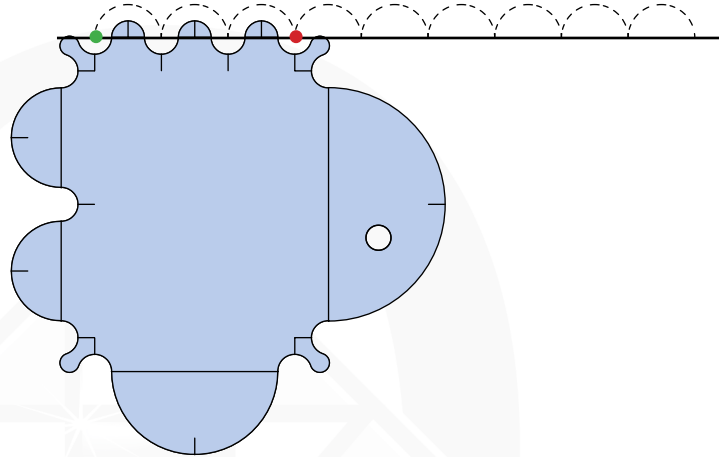


Try different sized arcs as desired.

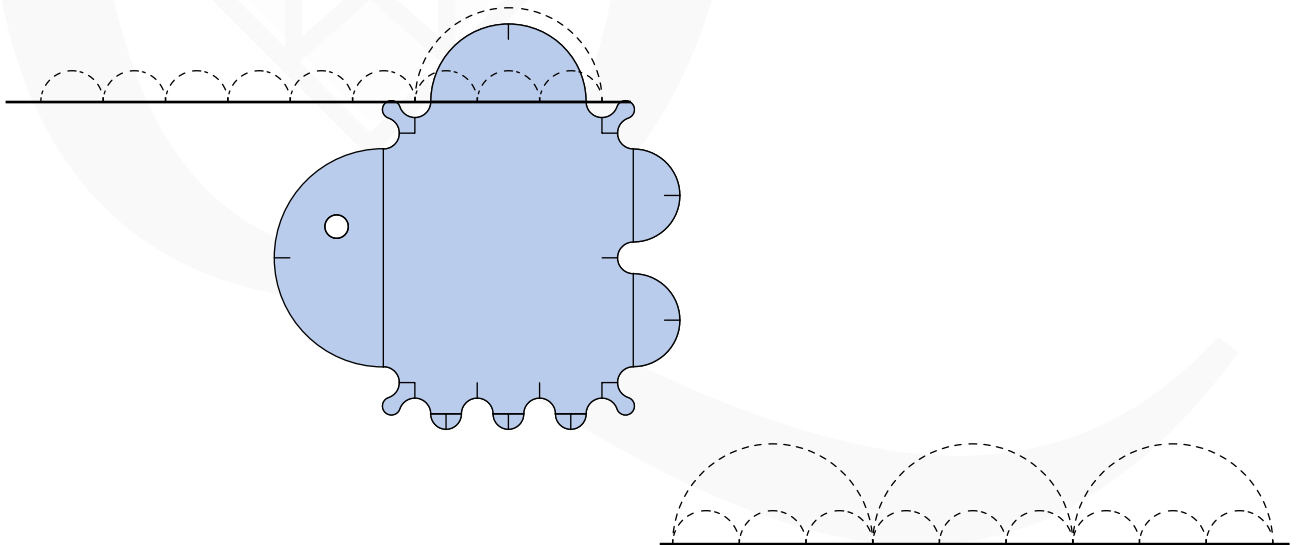


UMBRELLA VARIATIONS

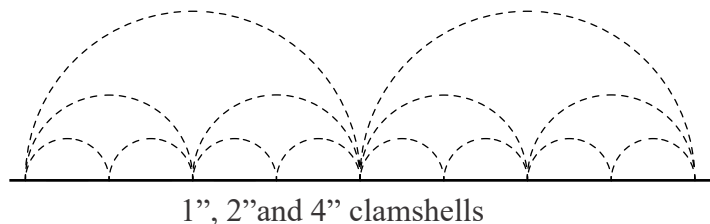
Start with a horizontal guideline or seam. Align the EZ2C® registration line on the 1” side of the template to your guideline and stitch from one end to the other. Slide the template sideways and repeat stitching, creating a row of 1” clamshells. Needle Down.



Without moving the foot, change to the 3” arc. Align the EZ2C® registration line on the 3” side of template to your guideline and stitch in the opposite direction from your previous stitching, creating an umbrella over 1” clamshells. Slide template and repeat as desired.



Try mixing different size clamshells for many variations.



1”, 2”and 4” clamshells