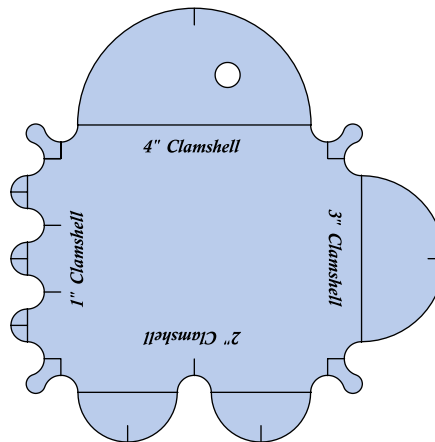


Clamshell Template Instructions





The Clamshell Tool is used for making arcs or an all-over clamshell pattern. It has different sizes on all 4 sides. 1", 2", 3" and 4".

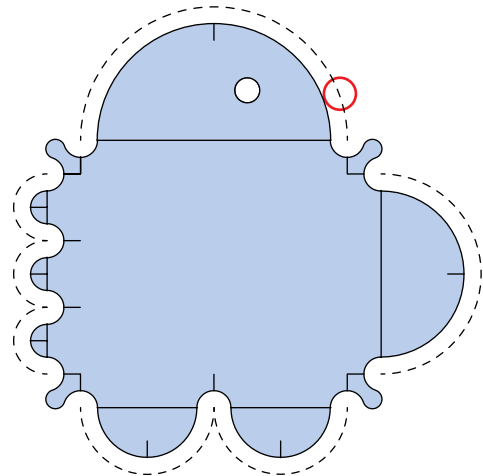
MQT-CSX4
1/4" thick

HMQT-CSX4
3/16" thick



If you are using the template(s) to quilt around (such as a long/mid-arm machine or high shank home machine), you must use 1/4" acrylic thickness. If you are on a low shank home machine, you must use 3/16" acrylic thickness. If you are on a machine that is stationary, you may find it helpful to put some type of agent such as Grip Stop Dots or spray adhesive on the templates. Before using, peel any film/paper masking from the templates so you can see through the clear plastic.

SYMBOL GUIDE	
	ruler foot
	start
	stop and needle down
	back stitching

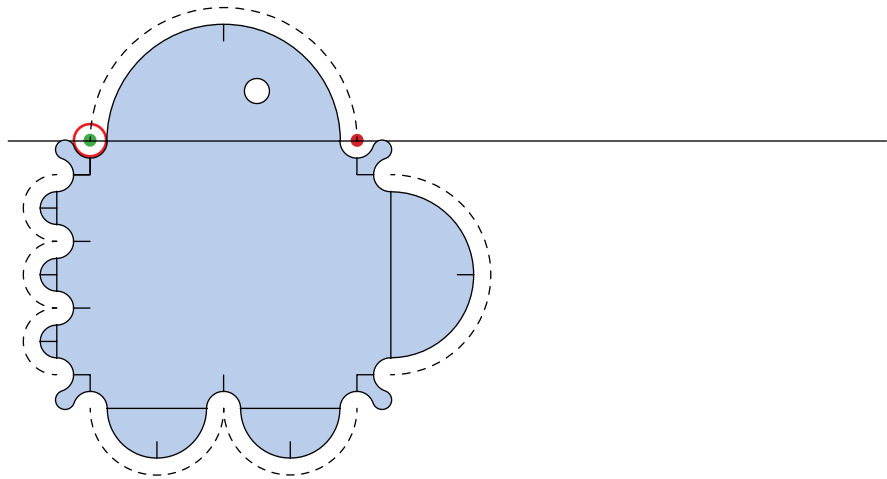


Note:

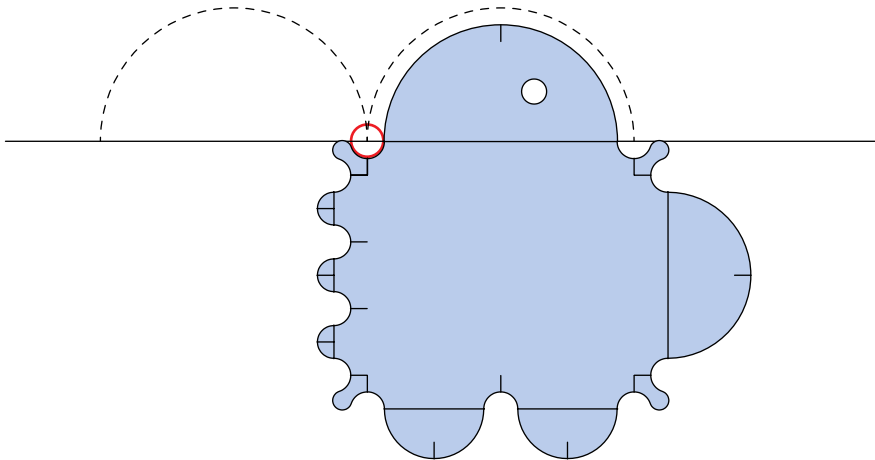
- 1) When using the template(s) to quilt around you must have a round, thick foot on your machine as well as a base (such as an extend-a-base or ruler base).
- 2) When using the template(s) to quilt around you will be stitching 1/2" larger (the width of your foot) or 1/4" wider if only using a portion of the template (the distance from your needle to the outer edge of your foot).
- 3) You may need to start with drawn/chalked guidelines or seam lines on your quilt.

CLAMSHELL PATTERN FILL

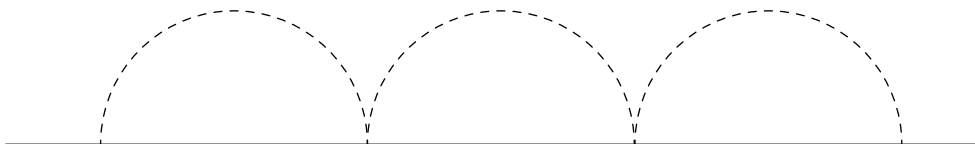
Align the etched line on the template to your guideline, and sew from one end to the other.



Move the tool over and align arcs with the horizontal line and ruler foot. Stitch next arc. Continue in this fashion for desired length.



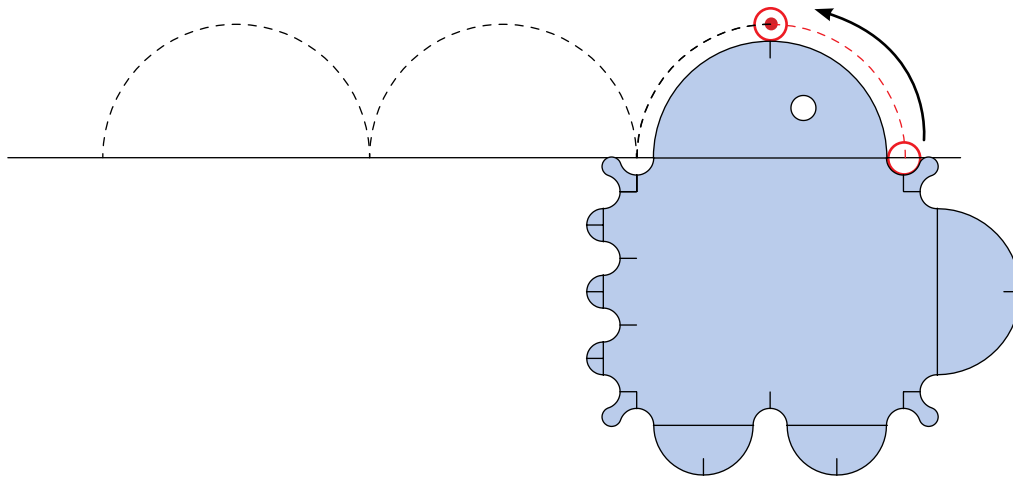
You can stop here for a single row of arcs.



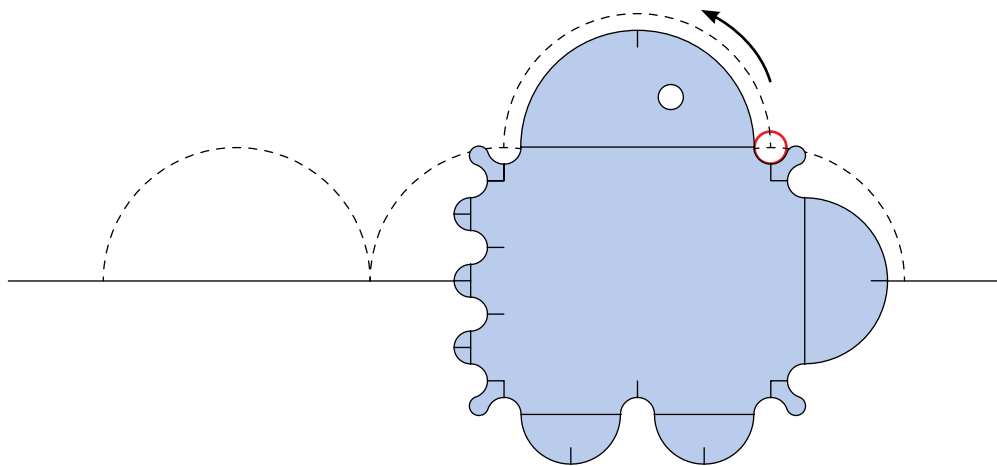
Try staggering the arcs for a fun variation.



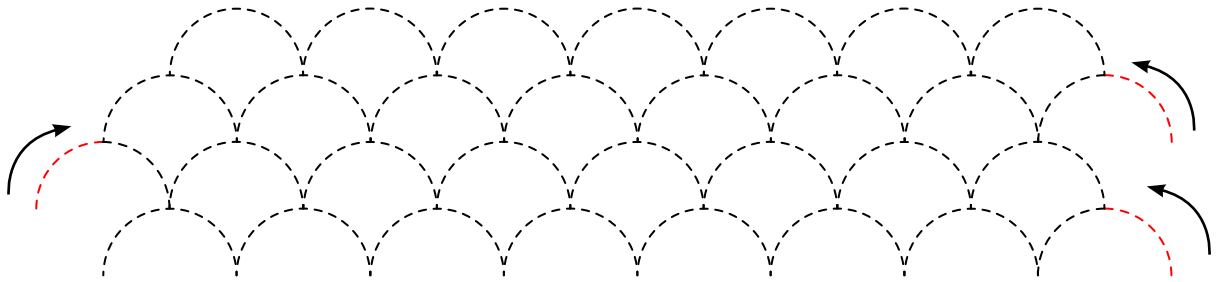
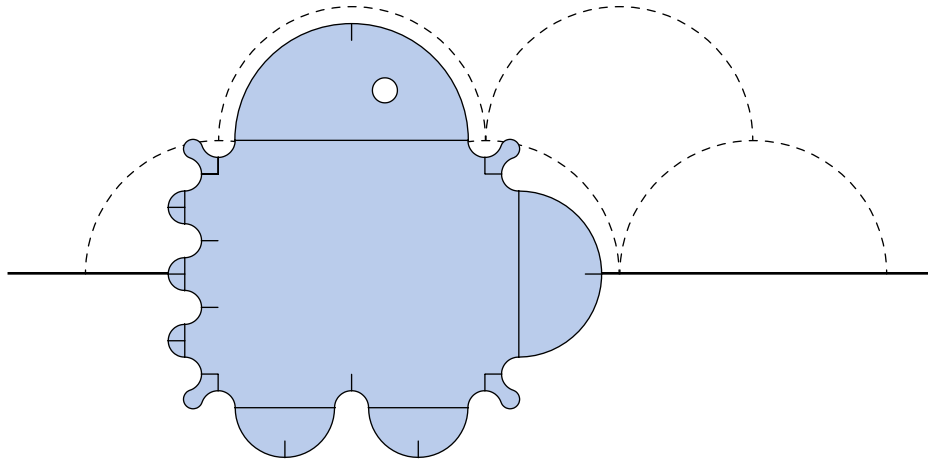
Continue for filled clamshell. When you get to the end of your base row, backtrack over 1/2 of last arc, stopping at small etched line on template as shown below.



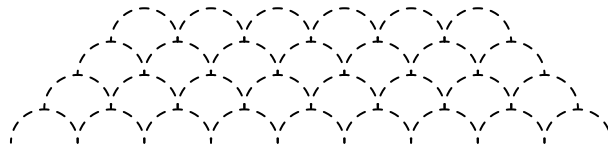
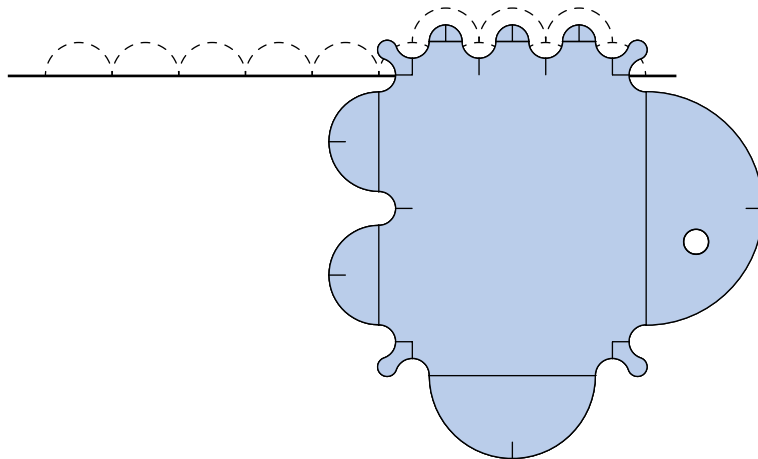
Move ruler to this new position aligning the small arc with the ruler foot and etched horizontal line with the top of the stitched arcs. Stitch across to the other side of the arc. Continue stitching and moving template as in previous row but this time in the opposite direction.



Fill in desired area with staggered rows of clamshell.

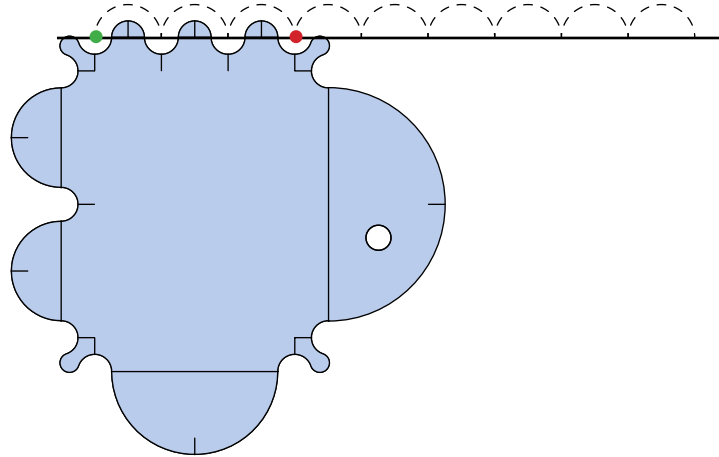


Try different sized arcs as desired.

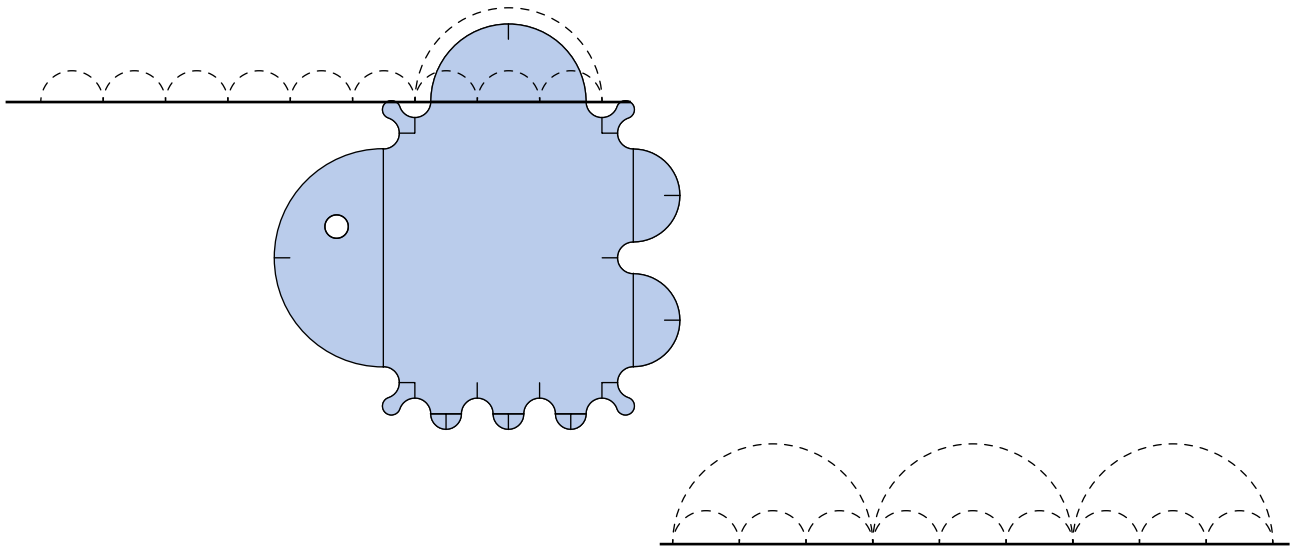


UMBRELLA VARIATIONS

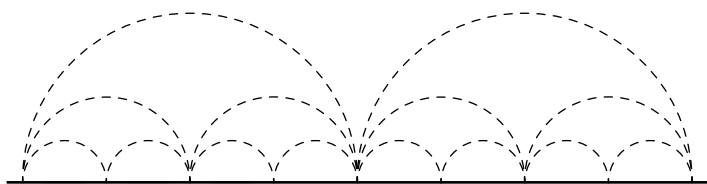
Start with a horizontal guideline or seam. Align the etched line on the 1" side of the template to your guideline and sew from one end to the other. Move the template over and repeat stitching, creating a row of 1" clamshells. Needle down.



Without moving the foot, change to the 3" arc. Align the etched line on the 3" side of template to your guideline and sew in the opposite direction from your previous stitching, creating an "umbrella" over 1" clamshells. Move template and repeat as desired.



Try mixing different size clamshells for many variations.



1", 2" and 4" clamshells