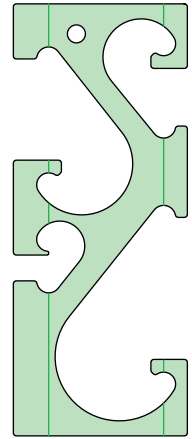


Traditional Heart Instructions

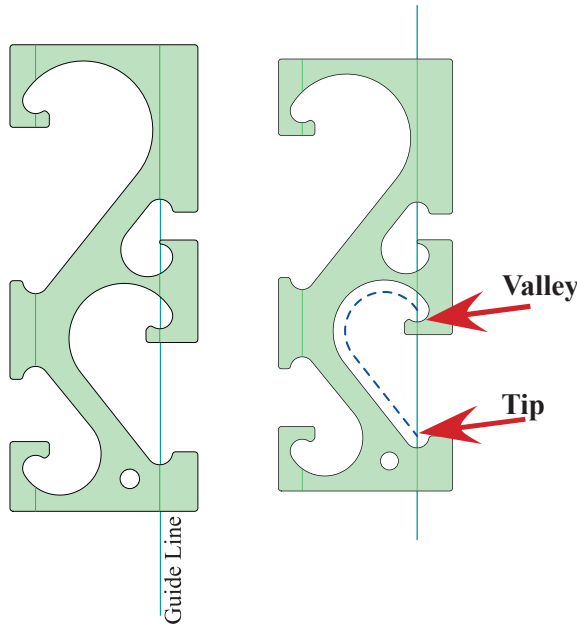
1", 2", 3" and 4" Hearts
 1/4" thick acrylic

The Traditional Heart Tool is designed to allow machine quilters to quilt a heart with a point at the valley AND the tip. This tool will make 1", 2", 3" and 4" hearts.



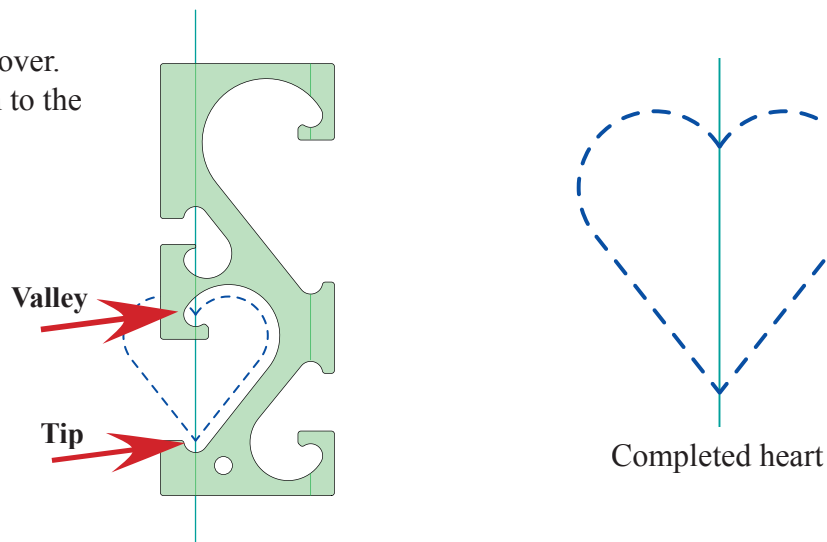
Basic Heart

1) Use either a line drawn (or chalked) on the quilt or a seam to create a Basic Heart. Use the etched lines on the tool to align the chosen size Heart over the line or seam.



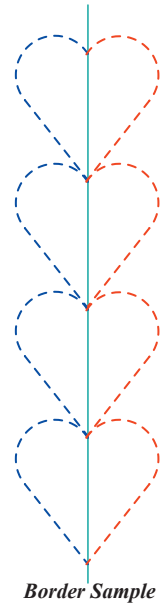
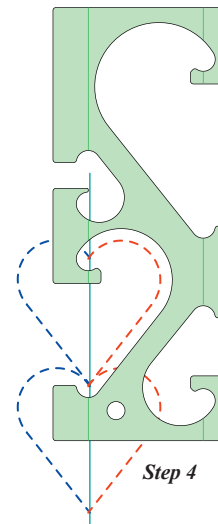
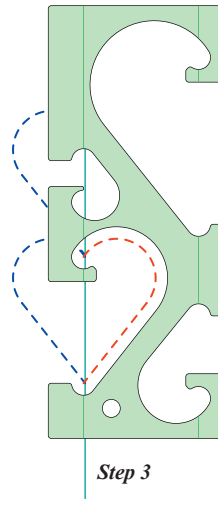
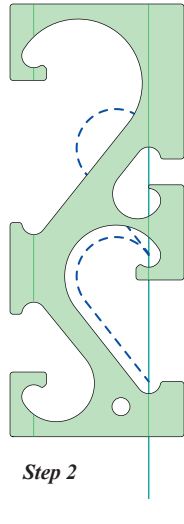
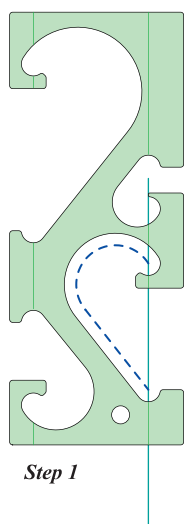
2) Starting at the valley of the heart, sew to the tip of the heart. Needle down.

3) Flip the Heart template over. Start from the tip and stitch to the valley for a complete heart.



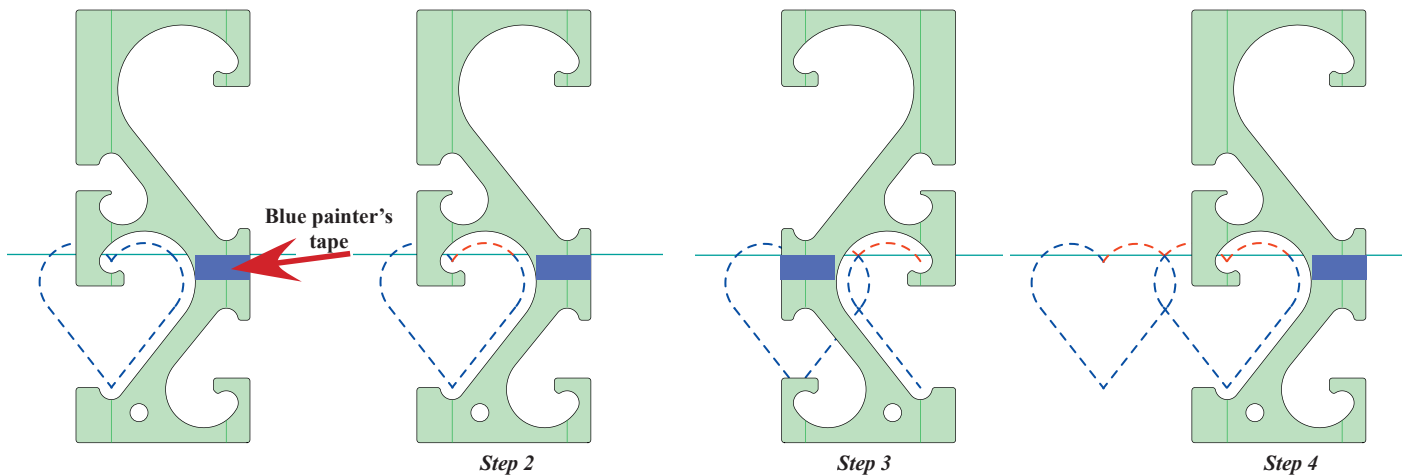
Vertical Heart Border

For vertical borders, simply stitch half of the heart on the way down the border and finish the heart on the way up. Mark a center guide line on border. Aligning the template's etched lines with guide line, start at the valley and stitch to the tip (Step 1). Needle down. Slide template down so the hopping foot is at the valley, stitch from the valley to the tip (Step 2). Continue these steps until you complete the length of the border. Needle down. To complete the heart; flip the template and stitch from the tip to the valley (Step 3). Continue until all the hearts are completed (Step 4).

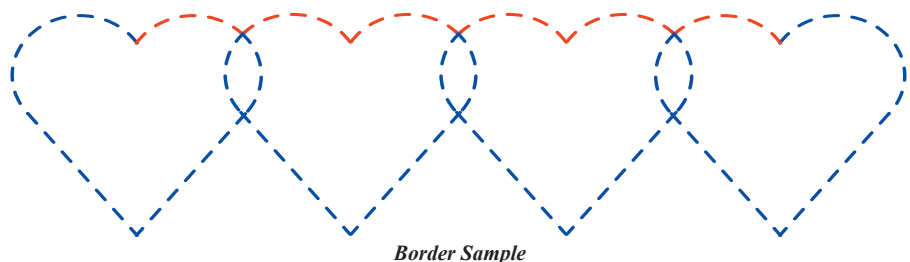


Horizontal Border Interlocking Hearts

For horizontal borders, follow the steps for the Basic Heart (shown on page 1). Mark or tape your template where you wish to interlock the hearts. *You can choose how much to interlock the hearts by how much you backtrack the stitching (shown in red).* From the valley, backtrack to your mark (Step 2). Flip template, stitch to valley, backtrack and stitch to tip (Step 3). Flip template over. Start from tip and stitch to valley (Step 4). Continue steps 2 through 4 to complete border.



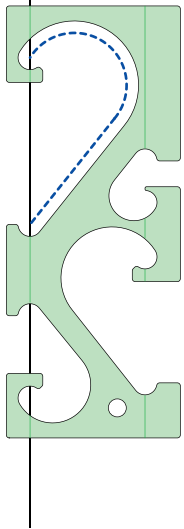
TIP: Use a piece of painter's tape as a guide for backtracking. This can also be helpful for placement if using a guide line to keep the hearts straight in a row.



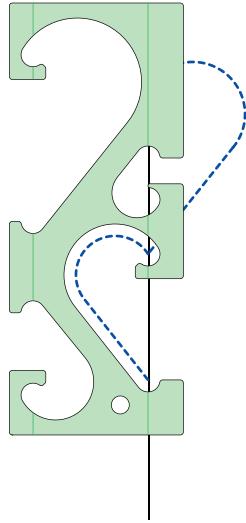
Graduating Vertical Heart Border

Start by marking a center guide line on border. The border motif is made by stitching one side of the heart down the border and finishing the second half of the heart on the way up.

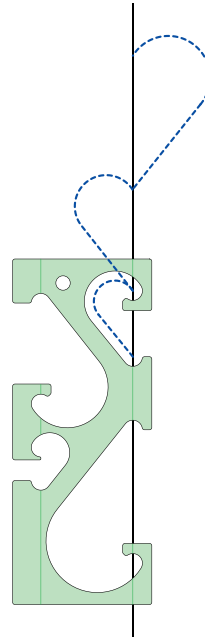
Step 1: Start with the 4" heart opening to the right of the guide line, lining up the etched lines on the guide line. Stitch from the valley to the tip, needle down.



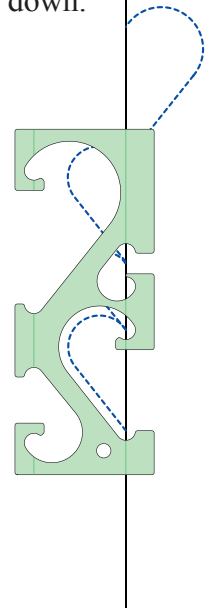
Step 2: Slide the template to stitch the 3" heart with the heart opening on the left side of the guide line. Stitch from the valley to the tip, needle down.



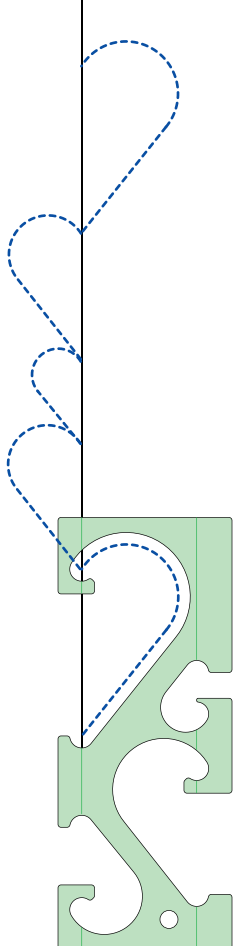
Step 3: Rotate template to the 2" heart with the heart opening on the left side of the guide line. Stitch from the valley to the tip, needle down.



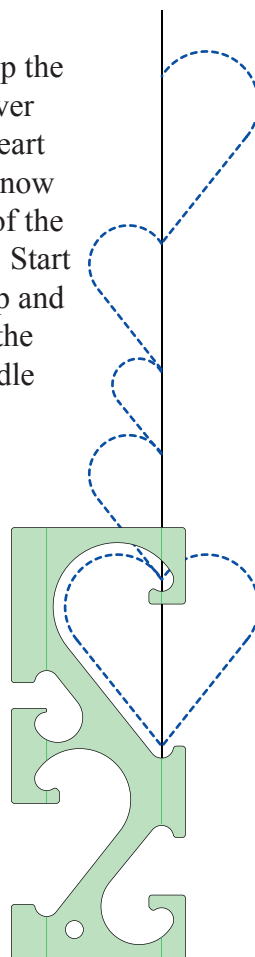
Step 4: Rotate template to the 3" heart with the opening on the left side of the guide line. Stitch from the valley to the tip, needle down.



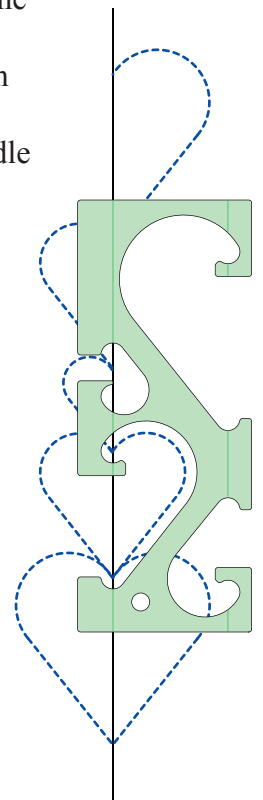
Step 5: Slide template to the 4" heart with the opening on the right side of the guide line. Stitch from the valley to the tip, needle down.



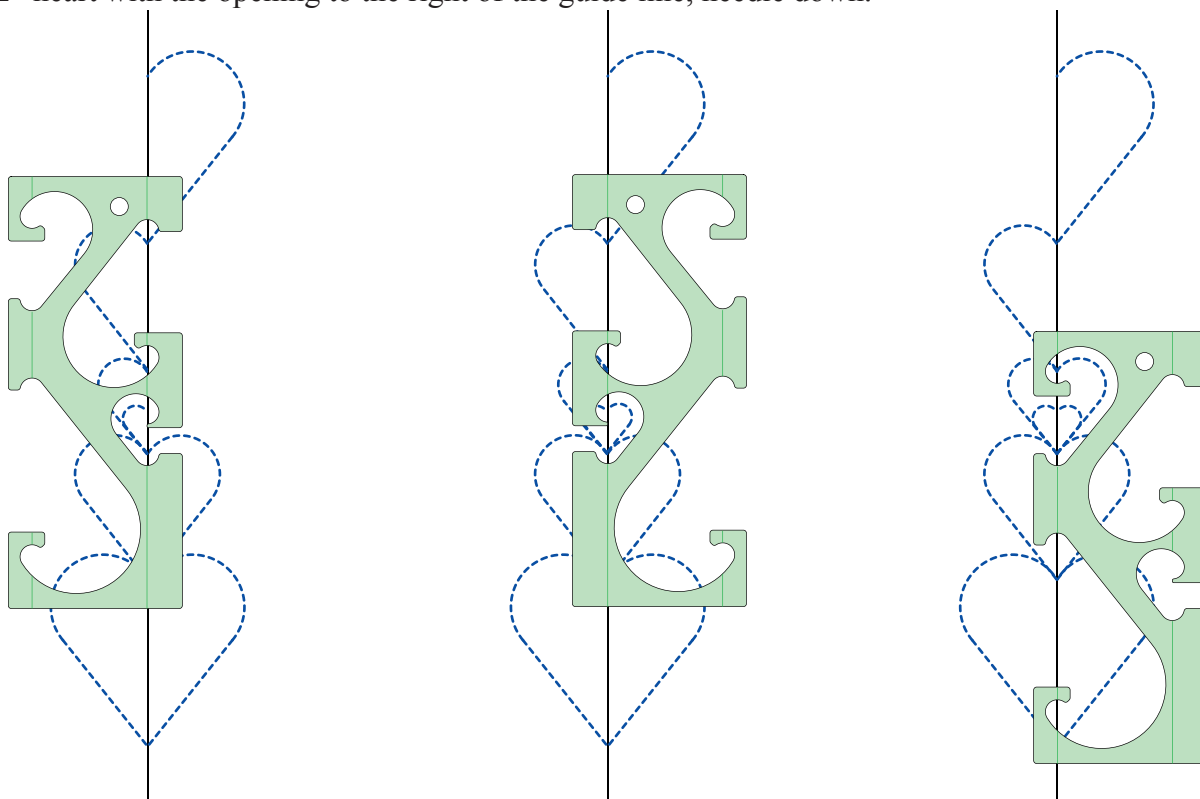
Step 6: Flip the template over so the 4" heart opening is now to the left of the guide line. Start from the tip and stitch into the valley, needle down.



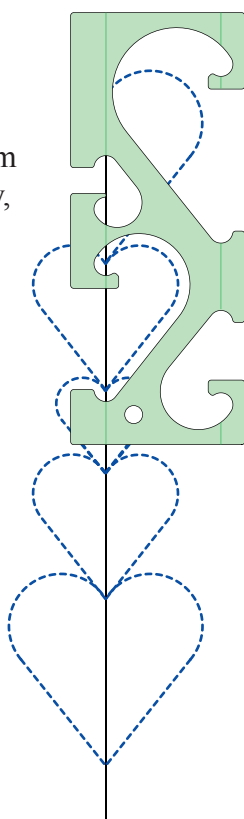
Step 7: Slide the template to the 3" heart. Stitch from the tip to the valley, needle down.



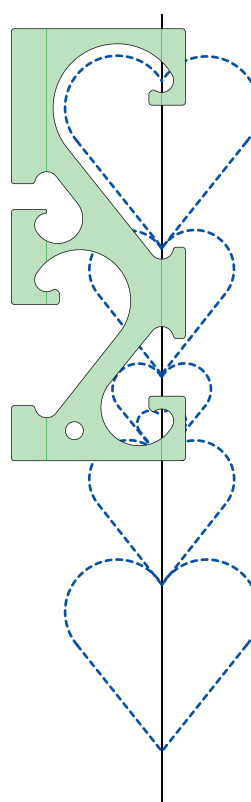
Step 8: Inside the 2" heart stitch a 1" heart. Slide template to the 1" opening on the left of the guide line. Stitch from the tip to the valley. Flip template, stitch from the valley to tip. Flip the template to the 2" heart with the opening to the right of the guide line, needle down.



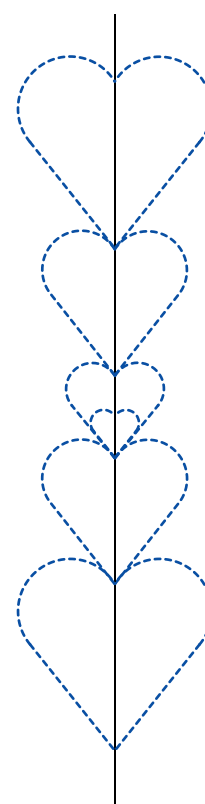
Step 9: Slide template to the 3" opening, stitch from the tip to the valley, and needle down.



Step 10: Slide template to the 4" opening, stitch from the tip to the valley to complete sequence.

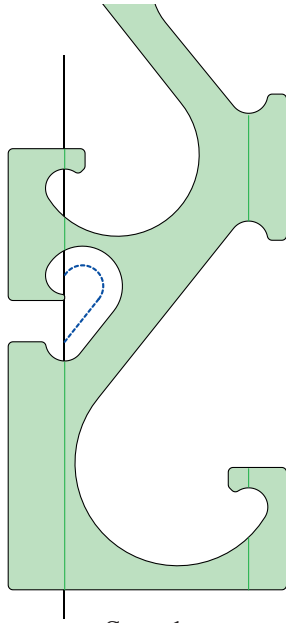


Finished motif



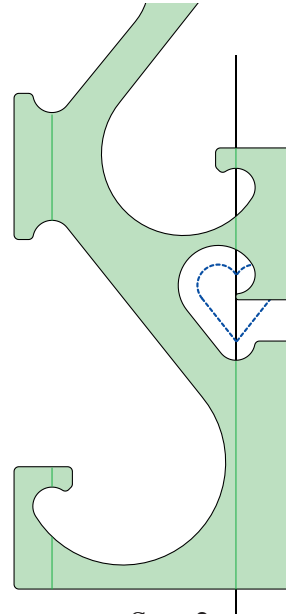
Hanging Heart

Start with the 1" heart aligning the etched lines along a guide line or seam. Stitch from the valley to the tip, needle down.



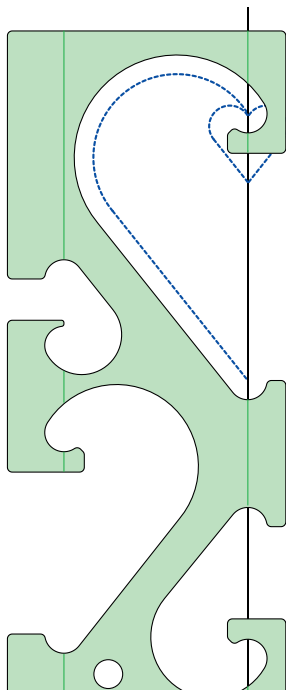
Step 1

Flip the template over, aligning the etched lines again for the 1" heart. Stitch from the tip to the valley, needle down.



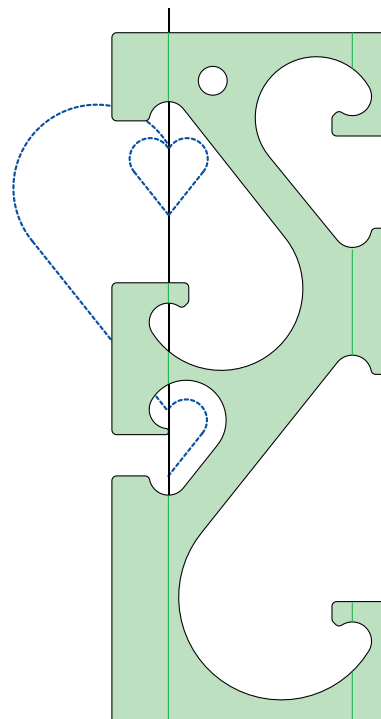
Step 2

Rotate template to the 4" heart, aligning the etched lines with the guide line or seam. Stitch from the valley to the tip, needle down.



Step 3

Flip the template over and repeat Steps 1 - 3 until you reached the desired length.



Step 4

Finished motif

